

# PRESSURE GAUGES AND VAPOR METER

## Pressure Gauges

### Ordering Information

Item Number	Service	Mount	Case Material	Max. Pressure	Case Size
SG2.5-3"WC	LPG	Bottom	Steel	35 w.c./20 oz.	2-1/2"
SG2-15	LPG	Bottom	Steel	15#	2"
BG2-30	LPG	Bottom	Brass	30#	2"
SG2-30	LPG	Bottom	Steel	30#	2"
SG2-60	LPG	Bottom	Steel	60#	2"
BG2-100	LPG	Bottom	Brass	100#	2"
SG2-100	LPG	Bottom	Steel	100#	2"
BG2-300	LPG	Bottom	Brass	300#	2"
SG2-300	LPG	Bottom	Steel	300#	2"
SGL2.5-300*	LPG	Bottom	Steel	300#	2-1/2"
SGCL2.5-300*	LPG	Back	Steel	300#	2-1/2"
SG4.5-300	LPG	Bottom	Steel	300#	4-1/2"
SGC2-300	LPG	Back	Steel	300#	2"
SGL2.5-400*	LPG	Bottom	Steel	400#	2-1/2"
SGCL2.5-400*	LPG	Back	Steel	400#	2-1/2"
A8060	NH3	Bottom	Stainless Steel	60#	2-1/2"
A8150	NH3	Bottom	Stainless Steel	150#	2-1/2"
A8400	NH3	Bottom	Stainless Steel	400#	2-1/2"

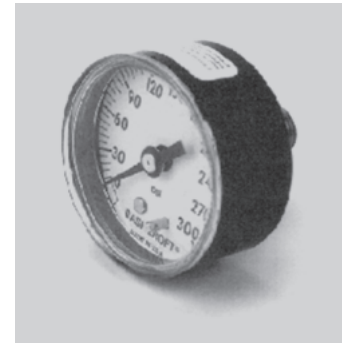
\* Liquid Filled



**BG2-300**



**SGL2.5300**



**SGC2-300**

## Vapor Meter

The L.P.-Gas Meter constructed of die-cast aluminum is compact, lightweight, and highly resistant to impact damage. It has adequate capacity to handle domestic loads including heating. This meter is designed to give accurate measurement from pilot burner load to full rated capacity. Temperature compensation accurately and automatically provides index readings in standard units of measurement at 60°F base temperature for ambient temperatures from -30° to +140°F. The compensator will adjust to a base temperature of 50° to 70°F. Includes mounting bracket.

### Ordering Information

Item Number	Index Units	Connection	CFH	BTU/hr	Max. Reading
S275	Cubic Feet	3/4 F. NPT	160	404,000	9999.9



**S275**

