

# MANOMETERS AND ACCESSORIES

## High Pressure Gauge Adapter

### Application

Designed for testing high pressure lines. Adapter has 0 to 300 PSIG gauge. A bleeder valve allows you to bleed down to correct pressure during pressure tests.

### Ordering Information

Item Number	Inlet Connection	Outlet Connection	Pressure Gauge Range (PSIG)
2962	Soft Nose M. POL	F. POL	0 to 300



2962

## High Pressure Test Set

### Ordering Information

Item Number	Contents
TJ-1	High-Pressure Test Block
Out-1	Out of Gas Leak Test



Out-1



TJ-1

## Low Pressure Test Set

### Application

This kit provides the equipment necessary for checking regulator delivery pressure (low pressure) at the appliances. The basic set contains a 2424A-2 low pressure gauge and a 3 foot — 3/16" O.D. flexible synthetic rubber tube. Adapters are also available.

### Ordering Information

Item Number	Contents
LPTK	Low Pressure Test Kit



LPTK

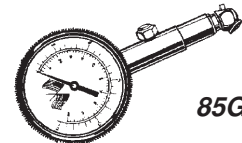
## Lo-Pressure Gauge

### Application

Accurate and easy to read, this lo-pressure gauge shows pressure in 1/2 lb increments from 0-15 PSIG and will hold the reading until the bleed valve is depressed. Features include bronze bourdon tube, geared brass movement, unbreakable crystal, and the unit is fully tested.

### Ordering Information

Item Number	Description
85G-15	Lo-Pressure Dial-Type Gauge



85G-15

## Press-Chek™ Adapter

### Ordering Information

Item Number	Description
85PC-02	1/8" Pressure Check Adapter
85PC-04	1/4" Pressure Check Adapter



## Spin Lok Adapter™

### Application

Built for fast, easy operation, the Spin Lok™ Adapter links the testing device to Item Number: 85PC-02 Press-Chek and activates the check valve mechanism. Spin Lok™ can be attached to any gauge or manometer.

### Ordering Information

Item Number	Description
00-SLA	1/8" Spin Lok Adapter



00-SLA

## Water Manometer Kit

### Application

The water manometer kit is especially suited for use with low pressure LP-Gas systems. It is ideal for pressure checks downstream of the low pressure regulator and at the appliances.

### Ordering Information

Item Number	Description
1212 KIT	Flexible Tube Water Manometer Kit



1212 Kit

# MANOMETERS AND ACCESSORIES

## Kuhlman 2000 A

### Application

The Kuhlman 2000 A Manometer is a multi-function instrument, capable of high pressure readings for stress tests, low pressure for leak detection. Complete with a valve installed at the top – in the open position the 2000 A is a precision water manometer. Close the valve and an air spring is formed, allowing pressure readings in ounces and pounds.

Ideal for gas service technicians because it eliminates the need for additional instruments when extended range is needed and ideal for servicing gas appliances and furnaces, refrigeration, air conditioning, storage tank and pipeline inspection, repair and installation. Can be used to check regulator input and output pressure in the field.

Measurements of:

- 0-16 inches water
- 0-200 lbs. pressure

A Portable Instrument That Is:

- Lightweight
- Durable
- Non-freezing
- Easy to Use
- Accurate
- Single Direct Reading Column

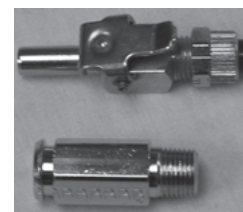
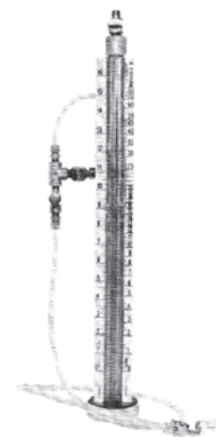
### Ordering Information

Item Number	Description	Fluid
2000-A	Manometer complete with valve on top, metal case, and operating instructions	1/2 PTK Fluid

## Accessories

### Ordering Information

Item Number	Description
#11	Kuhlman Quick Disconnect (Male)
#12	Kuhlman Quick Disconnect (Female)
1/2 PTK Fluid	Instrument Fluid (1/2 pint)
1 GALK Fluid	Instrument Fluid (Gallon)



#12 and #11

## Hand Pumps

### Ordering Information

Item Number	Description
B-25	Hand Pump with aspirator bulb type action for pressures up to 16 PSI



## U-Tube Manometer

### Ordering Information

Item Number	Description	Fluid
1222-16WM	U-tube Manometer	A126 Green



## Tube in Tube Manometer

### Ordering Information

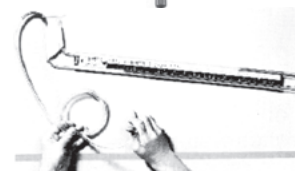
Item Number	Description	Fluid
1213-15	15" Direct Reading Manometer	A126 Green



## Dual Range Manometer

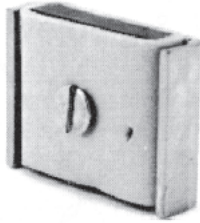
### Ordering Information

Item Number	Description	Fluid
1227	Dual Range Flex-Tube® U-inclined Manometer	A102 Red Gauge Oil



# MANOMETER ACCESSORIES

## Magnet Clip



### Ordering Information

Item Number	Description
A-364	Magnet Assembly for Item Number: 1221, 1222, 1227 Manometers, (2 required)

## Plastic Connector

### Application



### Ordering Information

Item Number	Description
A-319	Flexible Red PVL Connector for 1221, 1222, 1227 Manometer

## Serviceman's Friend

### Application

For use with flow meter and other applications.



### Ordering Information

Item Number	Description
TL-051	One end of fitting has 1/8" pipe thread, 1/4" pipe thread, and special 5/16" x 32 thread. Opposite end has hose fitting and 1/8" pipe thread. Hose can be used on either end.

## Gauge Tubing

### Application

Rubber tubing has less tendency to kink in storage and occupies less space, thus is best for portable work.



### Ordering Information

Item Number	Description
A202	Rubber Tubing 3/16" I.D., Length to 50'

## Gauge Fluids

### Application

For use in vertical manometers.



### Ordering Information

Item Number	Description
A126	Fluorescein Green Color Concentrate. Add 3/4 oz. to one quart distilled water. Contains a wetting agent to improve the meniscus characteristics. Do not use full strength.
008 Violet	3/4. oz. Violet Gauge Anti-freeze. Good to -40°F. Use full strength.

## Red Gauge Oil

### Application

The standard fluid for use in inclined manometers, "D" type vertical manometers and all Dwyer gauges using red oil.



### Ordering Information

Item Number	Description
A102	4 oz. bottle

## Adapter



### Ordering Information

Item Number	Description
A-339	Brass adapter, 1/8" NPT to 3/16" rubber and 1/8" I.D. plastic tubing