

MANOMETERS AND ACCESSORIES

High Pressure Gauge Adapter

Application

Designed for testing high pressure lines. Adapter has 0 to 300 PSIG gauge. A bleeder valve allows you to bleed down to correct pressure during pressure tests.

Ordering Information

Item Number	Inlet Connection	Outlet Connection	Pressure Gauge Range (PSIG)
2962	Soft Nose M. POL	F. POL	0 to 300



2962

High Pressure Test Set

Ordering Information

Item Number	Contents
TJ-1	High-Pressure Test Block
Out-1	Out of Gas Leak Test



Out-1



TJ-1

Low Pressure Test Set

Application

This kit provides the equipment necessary for checking regulator delivery pressure (low pressure) at the appliances. The basic set contains a 2424A-2 low pressure gauge and a 3 foot — 3/16" O.D. flexible synthetic rubber tube. Adapters are also available.

Ordering Information

Item Number	Contents
LPTK	Low Pressure Test Kit



LPTK

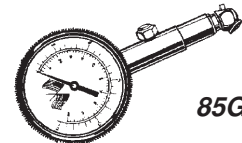
Lo-Pressure Gauge

Application

Accurate and easy to read, this lo-pressure gauge shows pressure in 1/2 lb increments from 0-15 PSIG and will hold the reading until the bleed valve is depressed. Features include bronze bourdon tube, geared brass movement, unbreakable crystal, and the unit is fully tested.

Ordering Information

Item Number	Description
85G-15	Lo-Pressure Dial-Type Gauge



85G-15

Press-Chek™ Adapter

Ordering Information

Item Number	Description
85PC-02	1/8" Pressure Check Adapter
85PC-04	1/4" Pressure Check Adapter



Spin Lok Adapter™

Application

Built for fast, easy operation, the Spin Lok™ Adapter links the testing device to Item Number: 85PC-02 Press-Chek and activates the check valve mechanism. Spin Lok™ can be attached to any gauge or manometer.

Ordering Information

Item Number	Description
00-SLA	1/8" Spin Lok Adapter



00-SLA

Water Manometer Kit

Application

The water manometer kit is especially suited for use with low pressure LP-Gas systems. It is ideal for pressure checks downstream of the low pressure regulator and at the appliances.

Ordering Information

Item Number	Description
1212 KIT	Flexible Tube Water Manometer Kit



1212 Kit