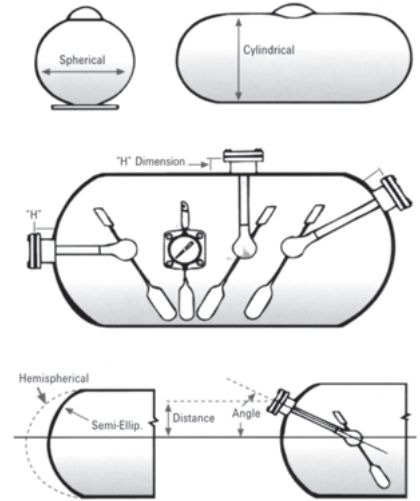


FLOAT GAUGES

Ordering ASME Horizontal Cylindrical Tanks for Above-Ground Service

- Determine gauge head size and material. The following choices exist:
 - Junior aluminum bolted head, 2-1/32" [51.6mm] bolt circle
 - Junior brass bolted head, 2-1/32" [51.6mm] bolt circle
 - Senior aluminum bolted head, 2-1/2" [63.5mm] bolt circle
 - Senior brass bolted head, 2-1/2" [63.5mm] bolt circle
 - 1-1/4" NPTF threaded Junior zinc head
 - 1-1/4" NPTF threaded Junior brass head
 - 1" NPTF threaded Junior zinc head
 - 1" NPTF threaded Junior brass head
- Specify tank diameter (on the tank nameplate, or measure the circumference of the tank, from which the diameter can be calculated).
- Specify gauge mounting location:
 - Top
 - End or side at centerline
 - Angle
- If on the tank end, specify head shape (hemispherical or semi-ellipsoidal)
- If the gauge is angle mounted:
 - Specify the degree of the angle from the horizontal centerline or;
 - specify the distance in inches from the horizontal centerline vertically to the center of the gauge opening
- Specify "H" dimension (riser height). This is the distance in inches from the top of the coupling or flange to the outside surface of the tank.



Ordering duplicate or replacement gauges may be simplified by referring to the numbering code on the side of the gauge head.

Ordering Information

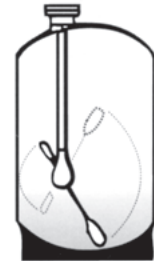
Item Number	Support Length	Tank Diameter	Mfg. Date
6284	6" [152]	24" [609.6]	D97

(Metric)



Ordering Vertical DOT Cylinders

- Determine gauge head size and material
- Specify tank diameter, or measure the circumference of the cylinder
- Specify height of cylinder (not including footing)
- Specify the distance from the center of the gauge opening to the outside wall of the cylinder
- Specify the "H" dimension, the measurement from the highest point of the cylinder head to the top of the coupling or flange
- Specify the tank capacity: 200# [90kg], 300# [136kg] or 420# [190kg]
- Furnish the name of the cylinder manufacturer



Junior & Senior Gauges

Application

These float gauges are intended primarily for domestic storage tanks. The Senior gauge has the larger head size 2 1/2" vs 2 1/32" for the Junior.

Ordering Information

Mounting	Tank Diameter	Part Number	
		1" MNPT	1 1/4" MNPT
Domestic Tanks	24"	HA130A	TA130A
	30"	HA160A	TA160A
Top	37"	HA194A	TA194A
	41"	HA210A	TA210A



REPLACEMENT GAUGES AND DIALS

Junior Gauges

Application	Tank Diameter	Part Number		
		Top	45 Angle	Side or End
Domestic Tanks	24"	JA124I	JC124B	JD080A
	30"	JA154I	JC154B	JD100F
	37"	JA192J	JC190B	JD120D
	41"	JA206I	JC210B	JD0140D

Senior Gauges

Application	Tank Diameter	Part Number		
		Top	45 Angle	Side or End
Domestic Tanks	24"	SA130A	SC130B	SD080D
	30"	SA160A	SC160A	SD100C
	37"	SA194A	SC194D	SD120G
	41"	SA214A	SC214C	SD140A

Replacement Dials for Rochester and Squibb Gauges

Ordering Information

Item Number	Gauge Type	Style	Description
5323S01848	Rochester	Jr. Dial/Direct Reading	5-95% Dial for NH ₃ Service A/G Tanks
5343S01791	Rochester	Jr. Dial/Direct Reading	Universal % Dial for 33.5# F/L Cylinder (Screw-on)
5374S02445	Rochester	Jr. Dial/Direct Reading	Dual use, 20#, 33.5# Cylinder (Snap-on)
5630S02538P	Rochester	Jr. Dial	70-10 Ohm, Twinsite Sender with bare lead wires
5638S02542P	Rochester	Jr. Dial	105-10 Ohm, Twinsite Sender with bare lead wires
5002S00002	Rochester	Sr. Dial/Direct Reading	5-95% Dial for NH ₃ Service
130012	Squibb	Jr. Dial or Sr. Dial	5-95% Dial for ASME A/G Tank
5909S02733	Rochester	Jr. Dial/Direct Reading	5-95% Dial for ASME A/G Horizontal Tank (Remote Ready)
5909S02772	Rochester	Jr. Dial/Direct Reading	10-80% Dial for DOT A/G Vertical Tanks (Remote Ready)
5909S02799	Rochester	Jr. Dial/Direct Reading	5-95% Dial for ASME U/G Horizontal Tank (Remote Ready)
5986S02733	Rochester	Sr. Dial/Direct Reading	5-95% Dial for ASME A/G Horizontal Tank (Remote Ready)
5364S01951	Rochester	Jr. Dial/Direct Reading	10-82% UG Vertical Tank (Snap-on)
5373S01789	Rochester	Jr. Dial/Direct Reading	Fractional E-90% Horizontal Lift Truck Cylinder
130022	Squibb	Jr. Dial	Dial for ASME A/G Tank 1" or 1-1/4" (Remote Ready)
130011	Squibb	Jr. Dial or Sr. Dial	Dial for ASME U/G Tank (Trinity, American, Thompson)



130012



130011



5374S02445



5323S1848



5630S02538P

Dial Repair Kits

Ordering Information

Item Number	Gauge Type	Style	Description
3180-17001*	Rochester	Sr. Dial	Conversion Dial Kit
130005*	Squibb	Jr. Dial	Repair Kit
130010*	Squibb	Sr. Dial	Repair Kit - 2 Eared

* Repair Kits do not include glue.



3180-17001

LIQUID LEVEL GAUGES

Magnetel Liquid Level Gauges

Application

The 6300 Series Magnetel Liquid Level Gauges are designed to accurately determine the percentage of tank volume for most liquids in stationary storage applications. Gauges are U.L. listed for L.P.-Gas and NH₃ service.

Ordering Information

Item Number	Description
C6342-11-108	Magnetel Gauge for 108" Diameter Tank
C6342-11-130	Magnetel Gauge for 130" Diameter Tank



Mounting Adapters

Application

Forged Steel with 3-1/2" bolt circle, 1/2"-13NC-2 threads.

Ordering Information

Item Number	Description	Material
22-29	2-1/2" M. NPT	Forged Steel
22-30	Welding Flange	Forged Steel

Replacement Parts

Ordering Information

Item Number	Description
0003-00433	Lexan Polycarbonate, for 8" Dial
0003-00404	Lexan Polycarbonate, for 4" Dial
15-10	Gasket under 8" Crystal (2 req'd.)
15-451	Gasket under 4" Crystal
15-19	Mounting Gasket, Spiral-wound, SS, Teflon filled
44-403	Hex Nut, 1/2"-13NC-2
56-404	Stud Bolt, 1/2"-13NC-2
93-403	8" Dial, Mounting Bracket (Uses 40-413 screws sold separately) (3 req'd)
93S1	4" Dial Mounting Bracket (Uses 40-413 screws sold separately) (2 req'd)
40-413	Stainless Steel Dial Screw, 10-32
130035	Squibb, 10" Replacement Dial
5015S01403	8" Dial, LPG & NH ₃ , 3-97%
5137S1262*	4" Dial, LPG & NH ₃ , 5-95%

* Standard for Rough Rider Gauges.

Rough Rider Liquid Level Gauges

Application

The M6300 Rough Rider Series of Magnetel liquid level gauges are designed to withstand the vibration and shock inherent in mobile service. They provide unsurpassed service life in over-the-road and off-road transport of liquids ranging from L.P.-Gas to crude oil. The M6300 Series allows continuous reading of tank contents in percentage of tank capacity. Rough Rider gauges are available for either end or side mounting. Gauges are U.L. listed for LP Gas and NH₃ Service.

Ordering Information

Item Number	Description
CM6339-11-72	Rough Rider for 72" Diameter Tank
CM6339-11-78	Rough Rider for 78" Diameter Tank
CM6339-11-79	Rough Rider for 79" Diameter Tank



L.P.-Gas Thermometers

Application

These 2" bi-metallic thermometers are commonly used on L.P.-Gas storage tanks, bobtails, and transports. Recommended for use only with thermowells.

Ordering Information

Item Number	Description
1250-04000-4"	4" Thermometer
1250-04000-6"	6" Thermometer



GAUGES & ACCESSORIES

Lift Truck Cylinder Gauges

Application

Liquid level gauges available in 4-bolt pattern or M. NPT.

Ordering Information

Item Number	Gauge Type	Style	Designed For
6281-48	Rochester	Jr. 4-bolt	Vertical 33.5# Forklift Cylinder
6284-34	Rochester	Jr. 4-bolt	Universal 33.5# Forklift Cylinder
7284-34	Rochester	1-1/4" NPTF	Universal 33.5# Forklift Cylinder
7384-1013	Rochester	3/4" NPTF	Jr. 33.5# Forklift Cylinder



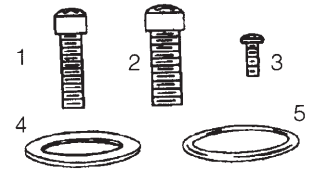
7384-1013

6284-34

Accessories for Rochester Gauges

Ordering Information

Item Number	Dwg. #	Description
40-414	1	Screw, Junior Gauge Head
40-415	2	Screw, Senior Gauge Head
40-416	3	Screw, Junior or Senior Dial, S.S.
15-4	4	Gasket, Senior Gauge, Flat
15-7	4	Gasket, Junior Gauge, Flat
15-21	5	O-Ring, Junior Gauge
15-22	5	O-Ring, Senior Gauge



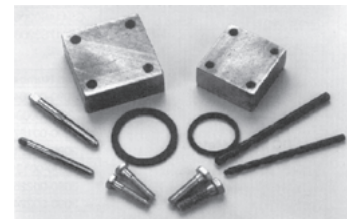
Percentage Gauge Tap & Drill Kit

Application

Everything required to repair a broken screw in any Junior or Senior Gauge coupling; packaged for convenience by IPS. Kit includes for Senior gauges one each of a block, tap, drill bit, and three (3) screws. Similar items, sized for Junior Gauges, also included.

Ordering Information

Item Number	Description
PGTD1	Percentage Gauge Tap & Drill Kit



Flow Indicators

Application

Taylor Flow Indicators from Squibb Taylor are installed in liquid pipelines to give visual indication of flow direction or the absence of flow. Capable of showing flow in both directions, the indicator mounts in a standard tee fitting, using the adapters supplied, with the flapper assembly in the center of the pipe. The hermetically sealed dial has a large 4" dial face with an easy-to-read flow direction pointer.

Ordering Information

Item Number	Service	Pipe Size	Includes
5520-2	NH ₃ or L.P.-Gas	2"	5305 Adapter (2" M. NPT)
5520-2.5	NH ₃ or L.P.-Gas	2-1/2"	5318 Adapter (2-1/2" M. NPT)
5520-3	NH ₃ or L.P.-Gas	3"	5305 Adapter (2" M. NPT)*

* Also requires 3" x 2" hex bushing, order Item Number: FS3 x 2B

