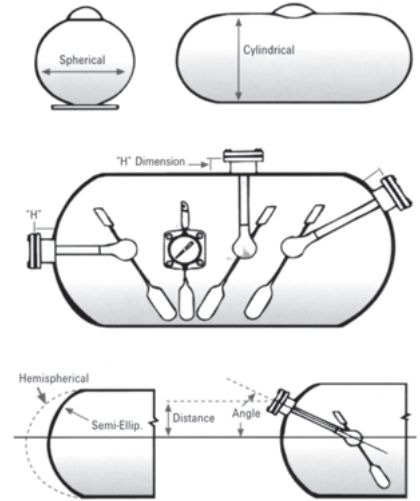


FLOAT GAUGES

Ordering ASME Horizontal Cylindrical Tanks for Above-Ground Service

- Determine gauge head size and material. The following choices exist:
 - Junior aluminum bolted head, 2-1/32" [51.6mm] bolt circle
 - Junior brass bolted head, 2-1/32" [51.6mm] bolt circle
 - Senior aluminum bolted head, 2-1/2" [63.5mm] bolt circle
 - Senior brass bolted head, 2-1/2" [63.5mm] bolt circle
 - 1-1/4" NPTF threaded Junior zinc head
 - 1-1/4" NPTF threaded Junior brass head
 - 1" NPTF threaded Junior zinc head
 - 1" NPTF threaded Junior brass head
- Specify tank diameter (on the tank nameplate, or measure the circumference of the tank, from which the diameter can be calculated).
- Specify gauge mounting location:
 - Top
 - End or side at centerline
 - Angle
- If on the tank end, specify head shape (hemispherical or semi-ellipsoidal)
- If the gauge is angle mounted:
 - Specify the degree of the angle from the horizontal centerline or;
 - specify the distance in inches from the horizontal centerline vertically to the center of the gauge opening
- Specify "H" dimension (riser height). This is the distance in inches from the top of the coupling or flange to the outside surface of the tank.



Ordering duplicate or replacement gauges may be simplified by referring to the numbering code on the side of the gauge head.

Ordering Information

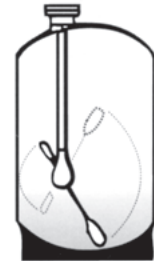
Item Number	Support Length	Tank Diameter	Mfg. Date
6284	6" [152]	24" [609.6]	D97

(Metric)



Ordering Vertical DOT Cylinders

- Determine gauge head size and material
- Specify tank diameter, or measure the circumference of the cylinder
- Specify height of cylinder (not including footing)
- Specify the distance from the center of the gauge opening to the outside wall of the cylinder
- Specify the "H" dimension, the measurement from the highest point of the cylinder head to the top of the coupling or flange
- Specify the tank capacity: 200# [90kg], 300# [136kg] or 420# [190kg]
- Furnish the name of the cylinder manufacturer



Junior & Senior Gauges

Application

These float gauges are intended primarily for domestic storage tanks. The Senior gauge has the larger head size 2 1/2" vs 2 1/32" for the Junior.

Ordering Information

Mounting	Tank Diameter	Part Number	
		1" MNPT	1 1/4" MNPT
Domestic Tanks	24"	HA130A	TA130A
	30"	HA160A	TA160A
Top	37"	HA194A	TA194A
	41"	HA210A	TA210A

