

BLACKMER PUMPS

LGF1 Pumps

Application

Most popular pump for small volume motor fueling, cylinder filling and supplying small vaporizers. LGF model is fitted with an integral bracket and coupling for direct flange mounting to a Nema C-face motor.

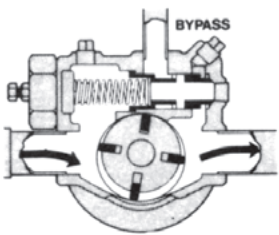


LGF1

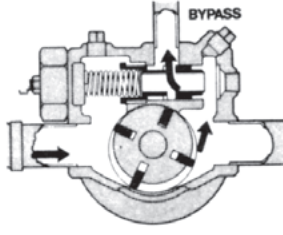
Ordering Information

Item Number	Description	Inlet Outlet	Capacity GPM		Bypass
			50 PSI DIF	100 PSI DIF	
LGF1E	Use with 1 H.P. Motor	1"	8	6	Built-in
LGF1PE	Use with 1-1/2 H.P. Motor	1"	13	10	Built-in

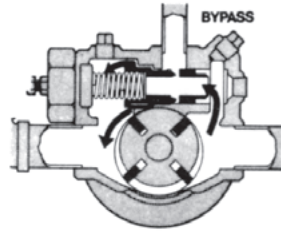
NOTE: 1" Models include combination relief/bypass valve.



Normal Operation



Back-to-Tank Bypassing



Safety Pressure Relief

LDFI Pumps

Application

Used for cylinder filling, motor fueling, small vaporizers and dispensers retrofits.

Ordering Information

Item Number	Description	Capacity GPM		Inlet
LDF1A	Use with 1 1/2 HP Motor	8	6	1"
LDF1PA	Use with 1 1/2 HP Motor	13	10	1"



LDF1

LGLF 1 1/4 & LGL 1 1/2 Pumps

Application

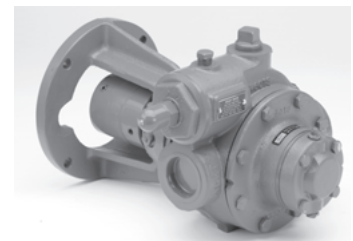
Ideal pump for motor fueling, multiple station cylinder filling and a variety of small transfer jobs. LGLF models are fitted with an integral bracket and coupling for direct flange mounting to a Nema C-face motor.

Ordering Information

Item Number	Description	Capacity GPM		Inlet/Outlet
		50 PSI DIF	100 PSI DIF	
LGLF1.25A	1 1/4 Pump	21	18	1-1/4"
LGRLF1.25A	1 1/4 Pump	16	14	1-1/4"
LGL1.25 (872308)	1 1/4 Pump	21	18	1-1/4"
LGLF1.5A	1 1/2 Pump	33	29	1-1/2"
LGL1.50 (872608)	1 1/2 Pump	33	29	1-1/2"



LGL 1.50



LGLF 1.25A

Blackmer

BLACKMER PUMPS

LGLD2, LGLD3, LGLD4 Pumps

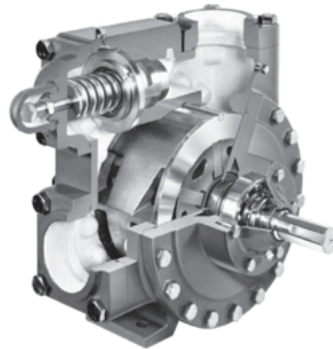


Application

These rugged pumps are ideal for bulk plant service, multiple cylinder filling applications, vaporizers, bobtails and transports. Pumps have double-ended drive shafts which allow pump to be positioned for clockwise or counterclockwise shaft rotation. All models have an internal safety relief valve, and a replaceable casing liner and end discs for easy rebuilding of the pumping chamber.

Ordering Information

Item Number	Inlet Outlet	Capacity, 520 RPM	
		50 PSI DIF	100 PSI DIF
LGLD2E	2" F. NPT	50 GPM	41 GPM
LGLD3E	3" F. NPT	108 GPM	84 GPM
LGLD4A	4" F. NPT	220 GPM	180 GPM



LGLD2E

TLGLF3 & TLGLF4 Pumps

Application

Designed to flange mount directly to an internal valve eliminating the need for inlet pipes, shut-off valves and external strainer which can restrict flow and cause vaporization problems. Both models are equipped with a double-ended drive shaft for clockwise or counterclockwise rotation, and an auxiliary intake port which can be used for emergency unloading of another tank or transport.

Ordering Information

Item Number	Intake	Capacity, 600 RPM			Aux. Intake
		Discharge	50 PSI DIF	100 PSI DIF	
TLGLF3C (870159)	3" 300 lb. Flange	2" F. NPT Elbow	85 GPM	73 GPM	2" F. NPT
TLGLF4A (872040)	4" 300 lb. Flange	Twin 2" F. NPT	260 GPM	220 GPM	3" F. NPT



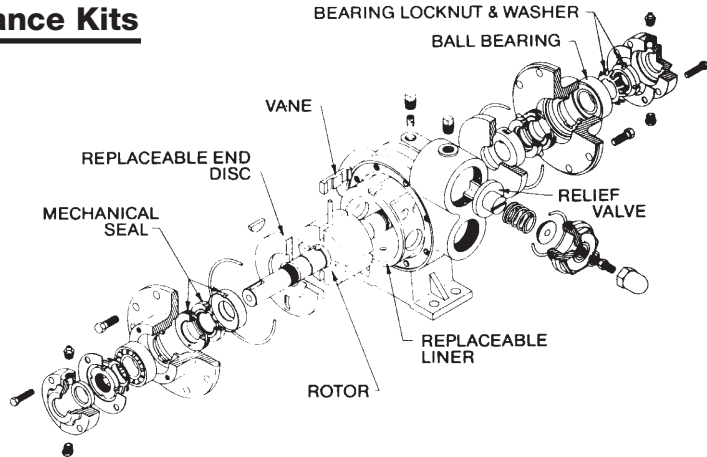
TLGLF3C



TLGLF4A

PUMP REPAIR PARTS AND KITS

Blackmer Maintenance Kits



Ordering Information

Pump Model	Maintenance Kit (Parts Chart Below)	Rotor & Shaft Double End	Rotor & Shaft Single End	8 Vane Rotor w/o Push Rods	Liner
LGF1E, LGF1PE, LGB1E, LGB1DE	898994 (6 Vane) 898916 (4 Vane)	N.A.	262907	N.A.	N.A.
LGL1.25, LGLF1.25A	898918	N.A.	263076	262300	183020 (8 Vane), 183004 (4 Vane)
LGRLF1.25A, LGRL1.25	898917	N.A.	263076	262300	183019 (8 Vane), 183003 (4 Vane)
LGL1.50A, LGL, LGLF1.50A	898919	N.A.	263076	262300	183301
LGLD2E	898920	264445	264443	N.A.	184405
LGLD3E	898981	265148	265149	N.A.	185111
TLGLF3C	898923	265147	N.A.	N.A.	185101
LGLD4A, TLGLF4A, LGL4A	898922	262024	262023	N.A.	182000
LDF1A, LDF1PA	898994	N.A.	262907	N.A.	N.A.

Individual Parts for Maintenance Kits

Ordering Information

Description Of Parts	Kit No. 898916 (4 Vane) For Pump Model LGF1, LGF1P, LGB1E, LGB1PE Part Nos.	Kit No. 898994 (6 Vane) For Pump Model LGF1, LGF1P, LGE1E, LGB1PG, LDF1A, LDF1PA Part Nos.	Kit No. 898917 (4 Vane) For Pump Model LGRLF1.25A, LGRL1.25 Part Nos.	Kit No. 898918 For Pump Model LGL1-1/4, Part Nos.	Kit No. 898919 For Pump Model LG1-1/2, LGL1-1/2A Part Nos.	Kit No. 898920 For Pump Model LGLD2E Part Nos.	Kit No. 898981 For Pump Model LGLD3E Part Nos.	Kit No. 898923 For Pump Model TLGLF3C Part Nos.	Kit No. 898922 For Pump Model LGLD4A, LGL4A, TLGLF4A Part Nos.
O-Ring—Valv Cvr	701965	701965	711924	711924	711924	701919	701925	701919	701946
DuraVane	092913	092913	093088	093088	093088	091419	095131	095132	092019
Bearings	903405	903405	903114	903114	903114	903156	903172	903156	903172
Bearing Lockwashers	903532	903532	903533	903533	903533	903522	903524	903522	903542
Bearing Cvr Gask	383075	383075	383075	383075	383075	383940	385125	383940	385125
Shaft Key	909126	909126	909125	909125	909125	909130	909130	909130	909183
O-Ring—Flange	—	—	—	—	—	702004	702002	701919	701937
O-Ring—Flange (Larger)	—	—	—	—	—	—	—	702004	701919 2½x2½ 702004 2½x2½
O-Ring—Head	711941	711941	701918	701918	701918	702022	702041	711923	702039
Push Rod Set	—	—	123004	123076	123401	123905	125105	121607	122005
O-Ring Valve Cap	—	—	701949	701949	701949	—	—	—	701926
Grease Seal	331934	331934	331927	331927	331927	331918	331908	331918	331908
Dirt Shield	—	—	—	—	—	701480	—	701480	—
Mech. Seal Assem.	332920	332920	333045	333045	333045	334439	335225	331652	332050
Spring Guide O-Ring	711940	711940	—	—	—	—	—	—	—
Disc	—	063075	063075	063075	063075	064412	065112	065121	062039

COMPRESSORS, HYDRIVES AND BYPASS VALVES

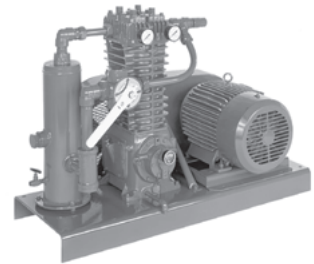
Blackmer Oil-Free Gas Compressors



Application

High performance for liquid transfer and vapor recovery of propane, butane and other liquefied gases.

- Design improvements promote longer service life and efficient performance
- Vapor recovery from unloading operation provides significant savings
- Durable construction and simplified parts installation make compressor field serviceable.



Ordering Information

Complete Compressor Transfer Unit*	Compressor & Flywheel Only	Capacity Range GPM	Motor	Standard Pipe Size	
			Horse Power	Vapor	Liquid
LB161-LU	LB161-CO	45-95	3 - 7-1/2	1-1/4"	2"
LB361-LU	LB361-CO	115-205	7-1/2 - 15	2"	3"
LB601-LU	LB601-CO	240-365	15 - 25	2-1/2"	4"

* Transfer unit includes compressor, gauges, base, piping, strainer, 4-way valve, liquid trap, belt guards and sliding base (motor is not included).

NOTE: Rebuilt compressors also available. Call for details.

Blackmer Hydrive Hydraulic Drive Package

Application

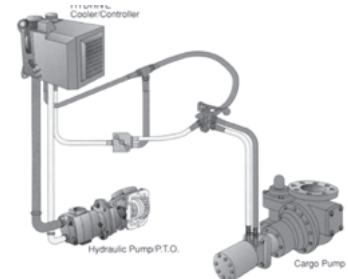
Blackmer's new Hydrive is a fully integrated hydraulic drive system that is designed for use on bobtails and transports.

The Hydrive lightweight system provides for lower idle speed, longer pump life and added safety with no exposed shafts. Factory engineers match the hydraulic pump and motor to the vehicle transmission.

NOTE: Hydrive must be sized and quoted.

Ordering Information

Item Number	Description
Hydrive-3	Complete Package for TLGLF3
Hydrive-4	Complete Package for TLGLF4
889900	Hydrive Cooler Only
895137	Hydraulic Motor Mounting Kit, TLGLF3
892035	Hydraulic Motor Mounting Kit, TLGLF4A



Blackmer Bypass Valves

Application

Simple, trouble-free construction. This Blackmer compact valve has only three moving parts. Designed to open precisely at its pressure setting and prevent leakage below the setting.

Ordering Information

Item Number	Body Size	Pump Size	PSI* Setting	PSI* Range	Cap. GPM
892801 (BV-3/4)	3/4" NPT	1-1/4" to 1-1/2"	95	70-100	50
892811 (BV-1)	1" NPT	1-1/4" to 1-1/2"	95	70-100	50
893080 (BV-1 1/4)	1-1/4" NPT	1-1/2" to 2"	115	90-125	125
893380 (BV-1 1/2)	1-1/2" NPT	2" to 3"	115	90-125	125
893980 (BV-2)	2" NPT	3" to 4"	95	90-125	225

* Other pressure ranges and settings are available.

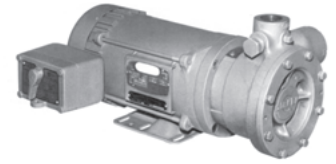


PUMP REPAIR PARTS AND MOTORS

Corken Pump Repair Parts

Ordering Information

Pump	Seal Assembly	Impeller
F9	113-CXA	1003-09
C10/F10	113-CXA	1003-0
C12/F12	113-CXA	1003-2
C13/F13	113-CXA	1003-3
C14/F14	113-CXA	1003-4
F15	113-CXA	1003-5

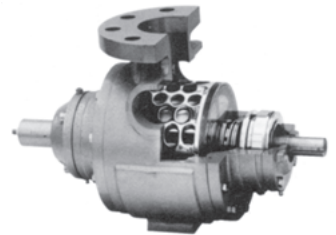


CORO-FLO

Corken Pump Repair Parts

Ordering Information

Pump Models	Repair Kit	Seal Assembly	Rotor & Shaft	Liner
521E, 522E T522E TR522E	2904-X2	1769-XRA	1166-1X12R	1162-2
T522G TR522G	3109-X1	1769-XRA	1166-1x8R	1162-2z
T722G TR722G	2905-X5	1769-XRA	3983-X2R	4060
1021E 1022E F1021E F1022E	2906-X2	1769-XRA	1208-1X2R	1201-2
F1521F F1522F T1522F TR1522F	2907-X3	1769-XRA	3350-X1R	1792-1
Z3200	3195-X1	4431-XA2	4495-X2R	4242



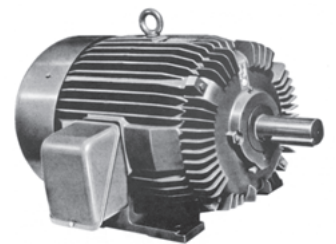
CORO-VANE

BALDOR

Explosion Proof Motors

Single Phase Ordering Information

Item No.	H.P.	RPM	Frame	Volts	Ship. Wt.
929977	1	1725	56C	115/230	57 lbs.
929982	1-1/2	1725	56C	115/230	73 lbs.
L5030T	1-1/2	3450	143T	115/230	54 lbs.
L5018	3	1725	215	115/230	151 lbs.
L5028T	3	3450	184T	115/230	84 lbs.
L5020	5	1725	215	230	164 lbs.



Explosion Proof Motor

Three Phase Ordering Information

Item No.	H.P.	RPM	Frame	Volts	Ship. Wt.
M7018T	1-1/2	3450	143T	230/460	42 lbs.
M7042T	3	1725	182T	230/460	70 lbs.
M7044T	5	1725	184T	230/460	99 lbs.
M7072T	5	3450	184T	230/460	85 lbs.
M7047T	7-1/2	1725	213T	230/460	169 lbs.
M7070T	10	1725	215T	230/460	163 lbs.
M7054T	15	1760	254T	230/460	319 lbs.